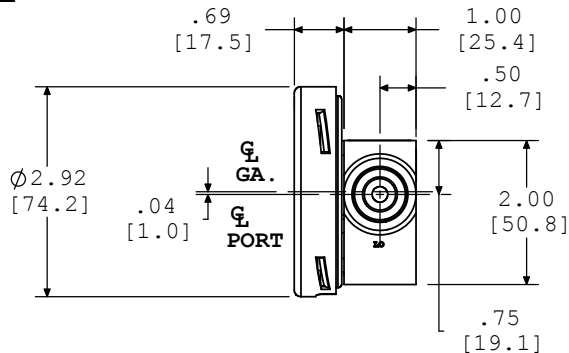
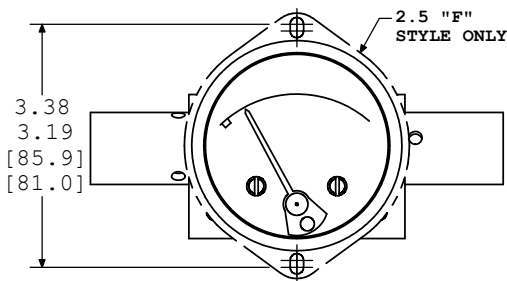
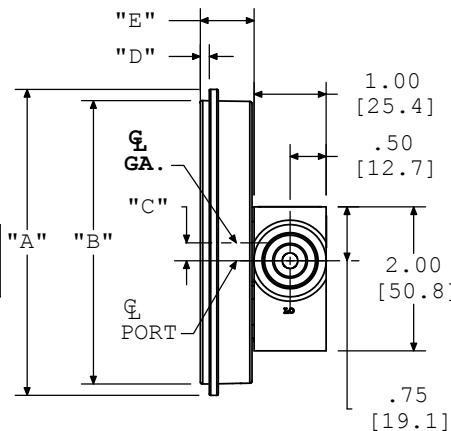
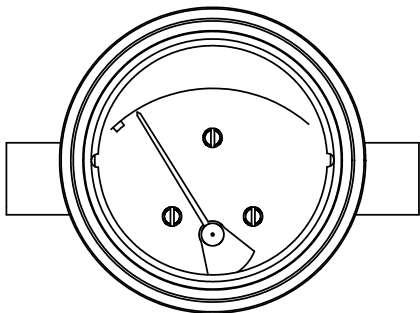


DIAL CASE STYLES

2.5" "B" STYLE & 2.5" "F" STYLE DIAL CASE



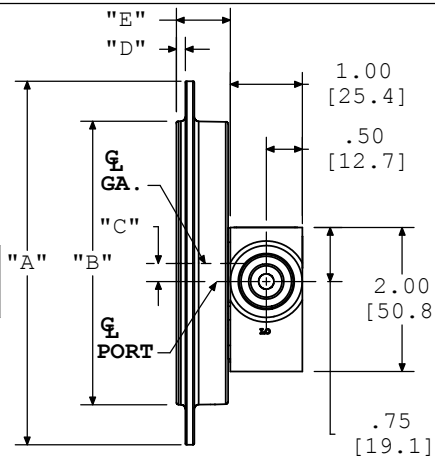
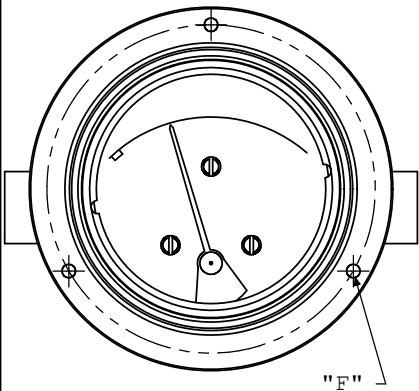
"B"-STYLE DIAL CASE



DIAL CASE SIZES & DIMENSIONS

| | 3.5" | 4.5" | 6.0" |
|---|-------------|-------------|-------------|
| A | 4.25[108.0] | 5.25[133.4] | 6.68[169.7] |
| B | 3.94[100.1] | 4.94[125.5] | 6.44[163.6] |
| C | .25[6.4] | .62[15.7] | 1.35[34.3] |
| D | .13[3.3] | .13[3.3] | .13[3.3] |
| E | .72[18.3] | .72[18.3] | .75[19.1] |

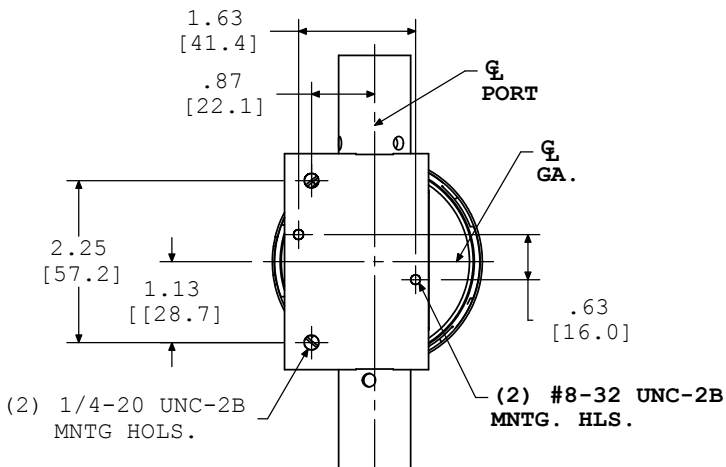
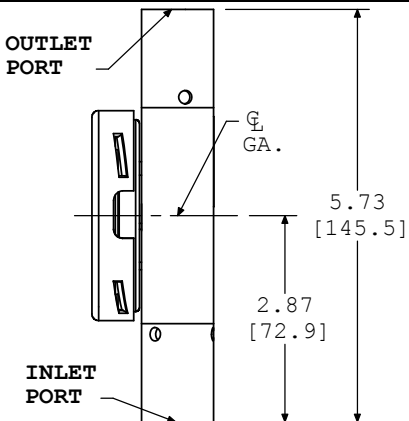
"F"-STYLE DIAL CASE



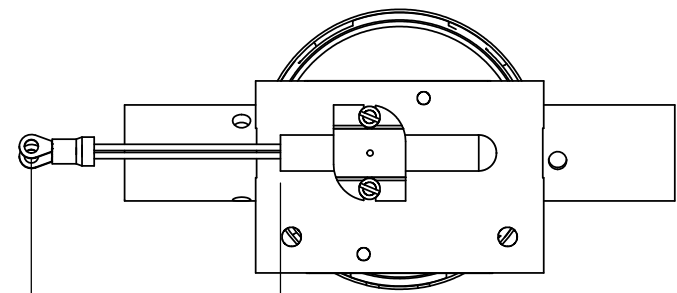
DIAL CASE SIZES & DIMENSIONS

| | 3.5" | 4.5" | 6.0" |
|---|--|--|--|
| A | 5.00[127.0] | 6.00[152.4] | 7.62[193.5] |
| B | 3.94[100.1] | 4.94[125.5] | 6.44[163.6] |
| C | .38[9.7] | .75[19.1] | 1.48[37.6] |
| D | .13[3.3] | .13[3.3] | .13[3.3] |
| E | .72[18.3] | .72[18.3] | .75[19.1] |
| F | PANEL CUTOUT: Ø4.00 3 MTG. HOLES Ø.187 EQUALLY SPACED ON A Ø4.56 B.C. | PANEL CUTOUT: Ø5.00 3 MTG. HOLES Ø.218 EQUALLY SPACED ON A Ø5.38 B.C. | PANEL CUTOUT: Ø6.50 3 MTG. HOLES Ø.218 EQUALLY SPACED ON A Ø7.00 B.C. |

PORTING LOCATIONS



MODEL 2321FGS (1/2" NPT) 1 SWITCH CONFIGURATION



STD. FINISHED
WIRE LENGTH
IS 12 in.

